

EMPEDROLA

Current status of construction: In project

Price: €2,867,000 + 10% VAT

PROPERTY DETAIL:

- Year of construction: Unspecified
- Type of work: New construction
- Type of property: House / Chalet
- Type of operation: Sale
- Province: Alicante
- Town: Calpe
- Orientation: South-west
- Floors: 3
- Bedrooms: 5
- Bathrooms: 5
- Toilets: 2
- Energy certification: B
- Views: Panoramic views of the sea and the Rock of Ifach
- Pool: Private - Overflowing
- Type of Heating: Heat pump - Central
- Water heater: Heat pump
- Private garden
- Garage: Yes, with an occupation of up to 5 cars
- Storage room: Yes
- Armored door: Yes
- Basement: Yes
- Laundry/gallery: Yes
- Built-in wardrobes: Yes
- Double glazing: Yes
- Terraces: 4 (three of them with a porch)
- Elevator with capacity for up to 6 people.

- Cinema
- Alarm on all floors.
- Safe.

DESCRIPTION

Construction in one of the most privileged areas of Calpe for its spectacular views of the rock.

This modern chalet consists of 3 floors with a lift, loft-style with open spaces and large windows which give it an abundance of natural light.

The house is made up of 5 bedrooms (all with bathroom and the 2 main ones with dressing room), toilet, large living room, large dining room, kitchen-office, garage, large terraces and infinity pool with solarium area.

All finished with top quality materials.

SURFACE

- HOUSING CONSTRUCTION: 592.59 M2
- TERRACES: 206 M2
- SWIMMING POOL: 8.9 X 4.20 WITH JACUZZI
- PLOT: 2010 M2

QUALITY MEMORIES

CARPENTRY

- All the exterior carpentry of the windows will be in white lacquered aluminium. Brand SCHUKO
- The bedroom windows will have aluminum roller shutters, motorized and in the same color as the carpentry. They will have remote control.
- GLAZING: Low-emissive double glass 4+4/12/3+3, 4/12/3+3 (safety and solar protection glass)

KITCHEN

- State-of-the-art appliances
- Kitchen open to the living room with island

TOILETS

- Bedrooms with separate bathroom
- Built-in toilet, suspended with cushioned seat
- Sink with enamel finish
- Equipped with towel rack for sink
- Basin faucet with GROHE click valve.
- Ceramic tiles with relief, sensory and visually pleasing.

YARD

- Private.

- It has trees selected from the list of native plant species in the area. Which are consistent with the Mediterranean climate. It adds a rustic and aromatic touch, ideal for any home garden.
- Automatic irrigation.

outdoor flooring

- CERAMIC: non-slip micro-beveled rectified porcelain stoneware tile.

indoor flooring

- CERAMIC: micro-beveled rectified porcelain stoneware tile.

interior linings

- Smooth white paint on walls and ceilings
- Tiled with stoneware tiles in the case of the bathrooms.

exterior coatings

- Acrylic rendering with white stone-type paint.

Swimming pool

- Gresite unalterable to acids
- Anti-algae joints.
- It has salt equipment.
- Overflowing.
- Beach and internal stairs of work.
- Discovered and private.
- Jacuzzi inside the pool

Exterior enclosure of the plot.

- Exterior walls with smooth plaster on two sides, 25cm thick.
- Large automatic door, with pedestrian and vehicle access, with remote control.

Air conditioning and hot water

- The house has underfloor heating with a gas boiler.
- Air conditioner installation.

Light

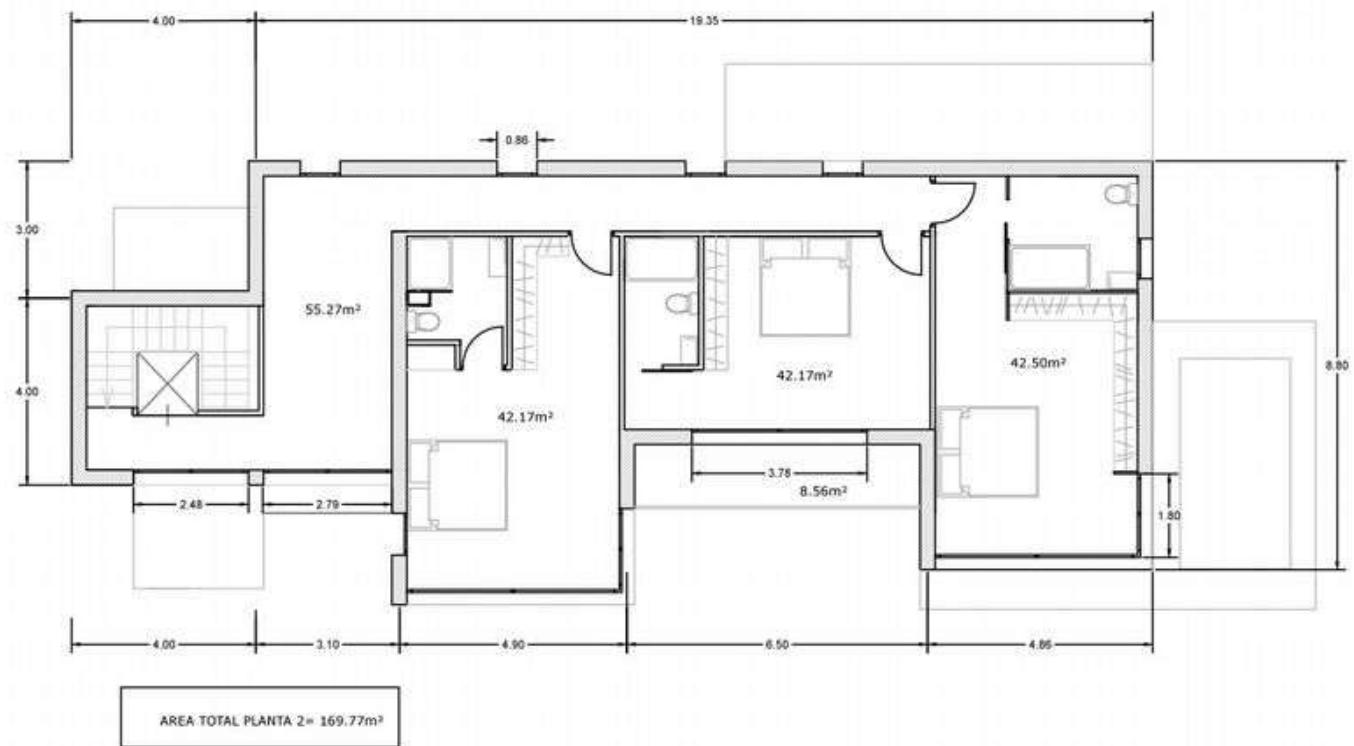
- Great light throughout the house.
- Large windows that allow natural light to enter.
- Lights around the house that allow good lighting at night, and provide a feeling of comfort.

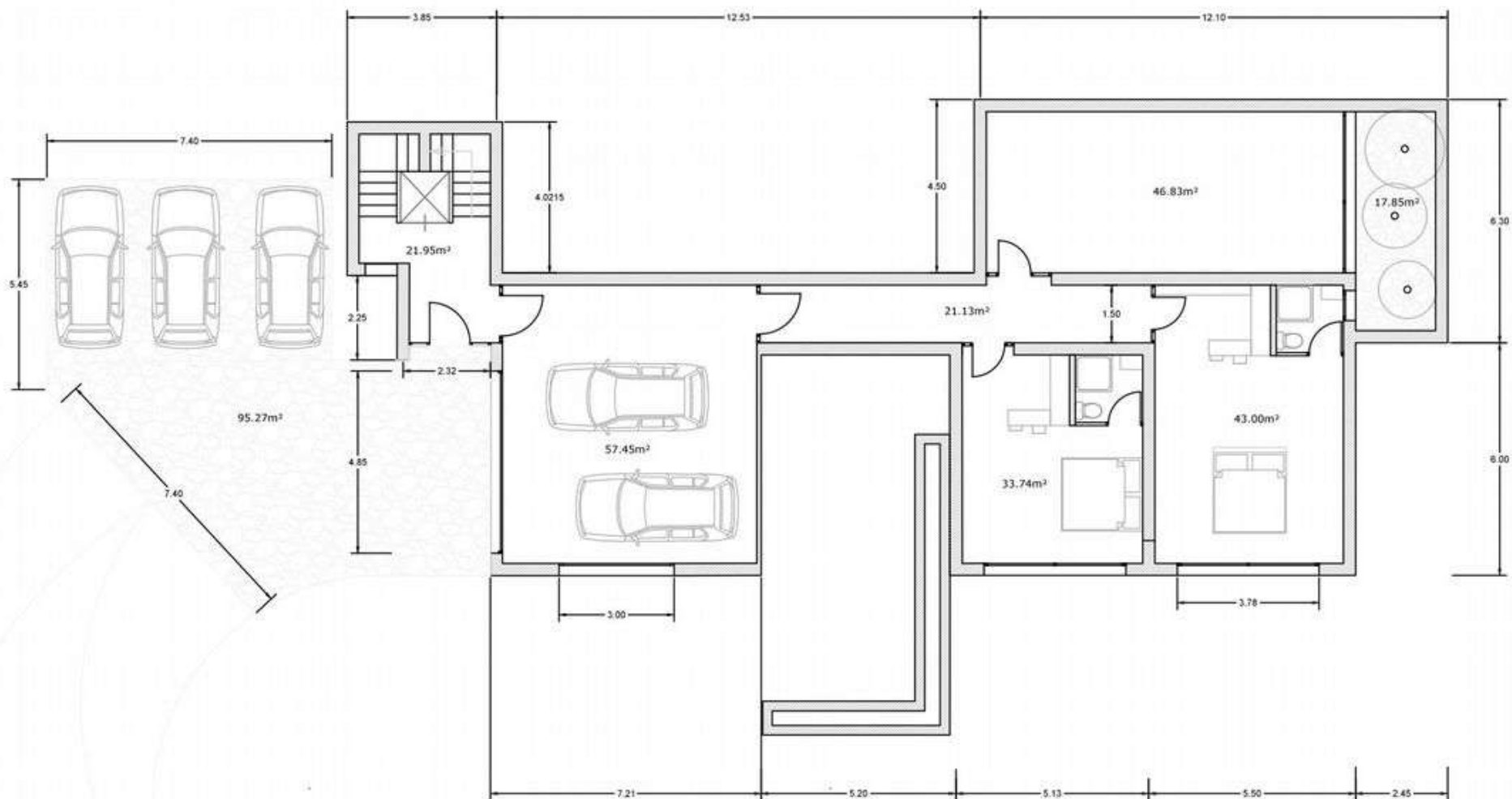
Wardrobes

- Built-in wardrobes of great quality.

Entrance to the house.

- 180m² printed concrete access ramp.
- Entrance with wide automatic door, with pedestrian and vehicle access, with remote control.





AREA TOTAL PLANTA 0= 240.52m²

Vivienda Canet Calpe. Planta 0. Escala: 1/150

