

MAR DEL NORTE, 44

Status: in project

Price: from €1,329,594 + 10% IVA

Property detail

- Property type: House / Chalet
- Year of construction: 2023-2024
- Type of operation: Sale
- Province: Alicante
- Population: Moraira
- Bedrooms: 3
- Bathrooms: 4
- Toilets: 1
- Built area: 643m²
- Plot area: 817m²
- Type of work: New construction
- Energy certification: A
- Kitchen: Open
- Garage: Yes
- Number of floors: 3
- Orientation: Southwest
- Pool: Private - with automatic cover
- Heating Type: Underfloor heating
- Type of Cooling: Ducted air conditioning.
- Water heater: Heat pump
- Private garden
- Parking: Yes
- Storage room: Yes
- Security door: Yes
- Basement: Yes
- Gym: Yes
- Winery: Yes
- Well: Yes
- Laundry: Yes
- Solarium: Yes
- Built-in wardrobes: Yes
- Double glazing: Yes
- English patio: Yes

DESCRIPTION

Villa in North Sea.

Modern luxury villa for sale in Moraira.

The house has three floors with three bedrooms, three bathrooms, a toilet, an American kitchen open to the living-dining room and a swimming pool with a private garden.

The plants are distributed as follows:

Basement:

This floor has 119m² of useful area, distributed in a 5m² warehouse, a 64m² basement, a 23m² area designed for a gym and a 27m² technical room. Plus an English patio

Low level:

On this floor we have the main access to our villa where as soon as we enter we find a cozy hall, a toilet and the access stairs to the upper and lower floors, we also have two bedrooms with their own bathroom and equipped with built-in wardrobes, if we go a little further, there is a large American kitchen open to the living-dining room, fully equipped with quality appliances and a laundry room.

On this floor we also have an area with a large finished garden with a walkable terrace, 2 parking spaces and a private pool with automatic cover.

First floor:

Going up the stairs we have the master bedroom with a useful area of 26.50 m² en suite equipped with the greatest amenities for your comfort, a 9m² dressing room, its own 8m² bathroom and an extensive 38m² walkable terrace.

Situation:

Very privileged location near the coast, 1.2km from Portet beach and 650m from the commercial area and the center of Moraira.

Quality memories

STRUCTURE

- The structure is reinforced concrete

CARPENTRY

- 4+4 and 6 safety glass with Cortizo brand air chamber.
- The access door to the home will be security.
- The window carpentry will be aluminum.
- Automatic blinds will be installed in the bedrooms in the same color as the carpentry.

KITCHEN

- BOSCH brand latest technology appliances.

FALSE CEILINGS

- False plasterboard ceiling will be placed throughout the home.

PARKING

- Printed concrete floor.
- 2 parking spaces.

BATHROOMS

- Sinks with Roca brand enamel finish.
- Built-in suspended toilets, Roca brand.
- Ceramic cladding with relief, sensory and visually pleasing.

GARDEN

- Large finished garden.
- Private.
- It has trees selected from the list of native plant species according to municipal tree protection ordinance. They are in line with the Mediterranean climate.
- Automatic watering.

EXTERIOR PAVEMENT

- CERAMIC: SALONI brand non-slip rectified porcelain stoneware tile.

INTERIOR PAVEMENT

- CERAMIC: SALONI brand non-slip rectified porcelain stoneware tile.

INTERIOR COVERINGS

- Smooth white paint on walls and ceilings.
- Tiled with stoneware tiles in the case of bathrooms.

POOL

- Tile unalterable to acids, model 5601 NATURE SEA SALT MESH, gloss finish.
- It has salt equipment.
- Anti-algae joints.
- Beach and interior construction stairs.
- Uncovered and private.
- With automatic cover

EXTERIOR ENCLOSURE OF THE PLOT.

- Exterior walls with smooth plaster on two sides, on top of which are 80 cm high iron defenses.
- Large automatic door, with pedestrian and vehicle access, with remote control, with a finish similar to the fenders.

AIR CONDITIONING AND HOT WATER

- The house has underfloor heating

STONE WALLS

- Our stone is carved by hand, these rocks coming from quarries in the region.

LIGHT

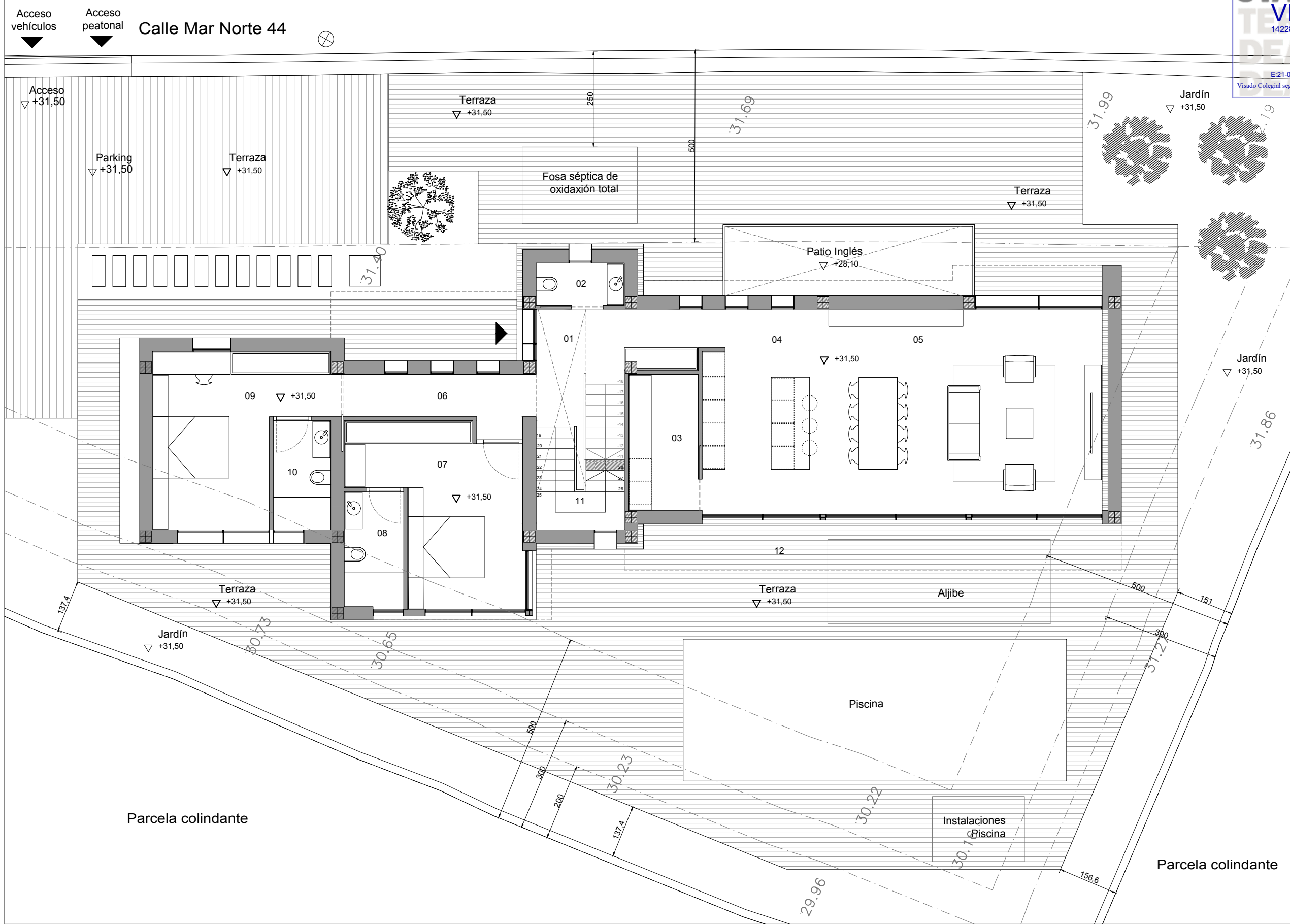
- Great light throughout the house.
- Large windows that allow natural light to enter.
- Lights around the house that allow good lighting at night, and provide a feeling of comfort.

WARDROBES

- High quality built-in wardrobes.
- Dressing room in the master bedroom.

Entrance to the house

- Solid cream marble steps, which give a natural and elegant appearance.



SUPERFICIE ÚTIL VIVIENDA		
PLANTA BAJA		
01. Hall		6.79 m2
02. Aseo		2.53 m2
03. Lavandería		6.50 m2
04. Cocina		28.74 m2
05. Salón - Comedor		27.05 m2
06. Distribuidor		6.27 m2
07. Dormitorio 1		16.64 m2
08. Baño 1		4.63 m2
09. Dormitorio 2		17.22 m2
10. Baño 2		4.27 m2
11. Escalera		9.38 m2
12. Porche		16.31 m2
SUPERFICIE ÚTIL TOTAL		146.33 m2

Tipo de proyecto:
PROYECTO BÁSICO Y DE EJECUCIÓN DE VIVIENDA UNIFAMILIAR AISLADA Y PISCINA

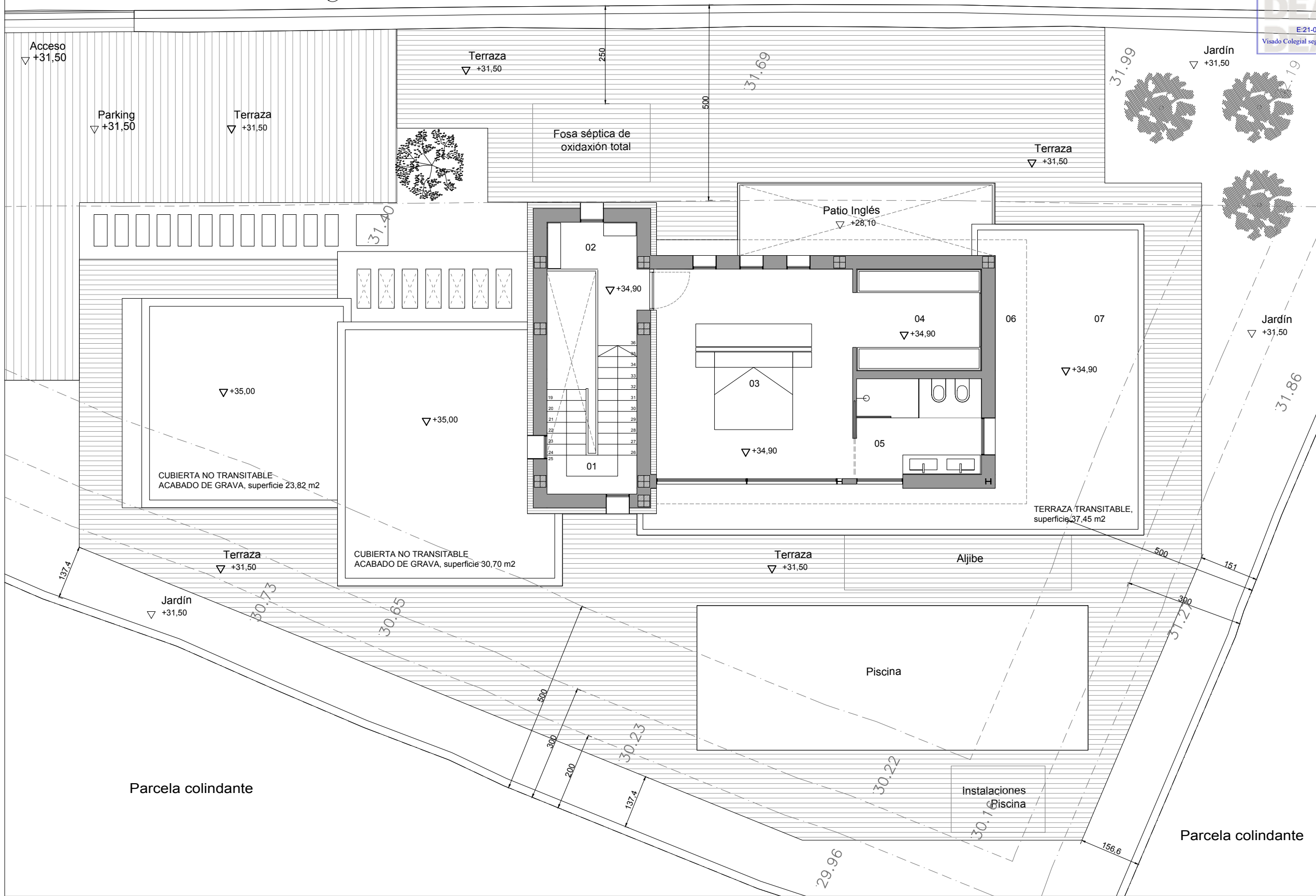
Ciente: JORGE CANET S.L. Arquitectos:
 BERTOMEU MORAGUES, JUAN BERNARDO nº col. 14.228

Situación: Calle Mar Norte 44, TEULADA (ALICANTE)

PLANO:
PLANTA BAJA - DISTRIBUCIÓN

JuanBernardo
BERTOMEU
ARQUITECTOS

Fecha: Septiembre de 2022
 Escala: 1/100 en A3 Plano: **08**



SUPERFICIE ÚTIL VIVIENDA	
PLANTA PRIMERA	
01. Escalera	11.41 m2
02. Estar	4.74 m2
03. Dormitorio Principal	26.90 m2
04. Vestidor	8.29 m2
05. Baño Principal	7.93 m2
06. Terraza Cubierta	9.70 m2
07. Terraza Descubierta	28.40 m2
SUPERFICIE ÚTIL TOTAL	97.37 m2

Tipo de proyecto:
PROYECTO BÁSICO Y DE EJECUCIÓN DE VIVIENDA UNIFAMILIAR AISLADA Y PISCINA

Ciente: JORGE CANET S.L. Arquitectos:
 BERTOMEU MORAGUES, JUAN BERNARDO nº col. 14.228

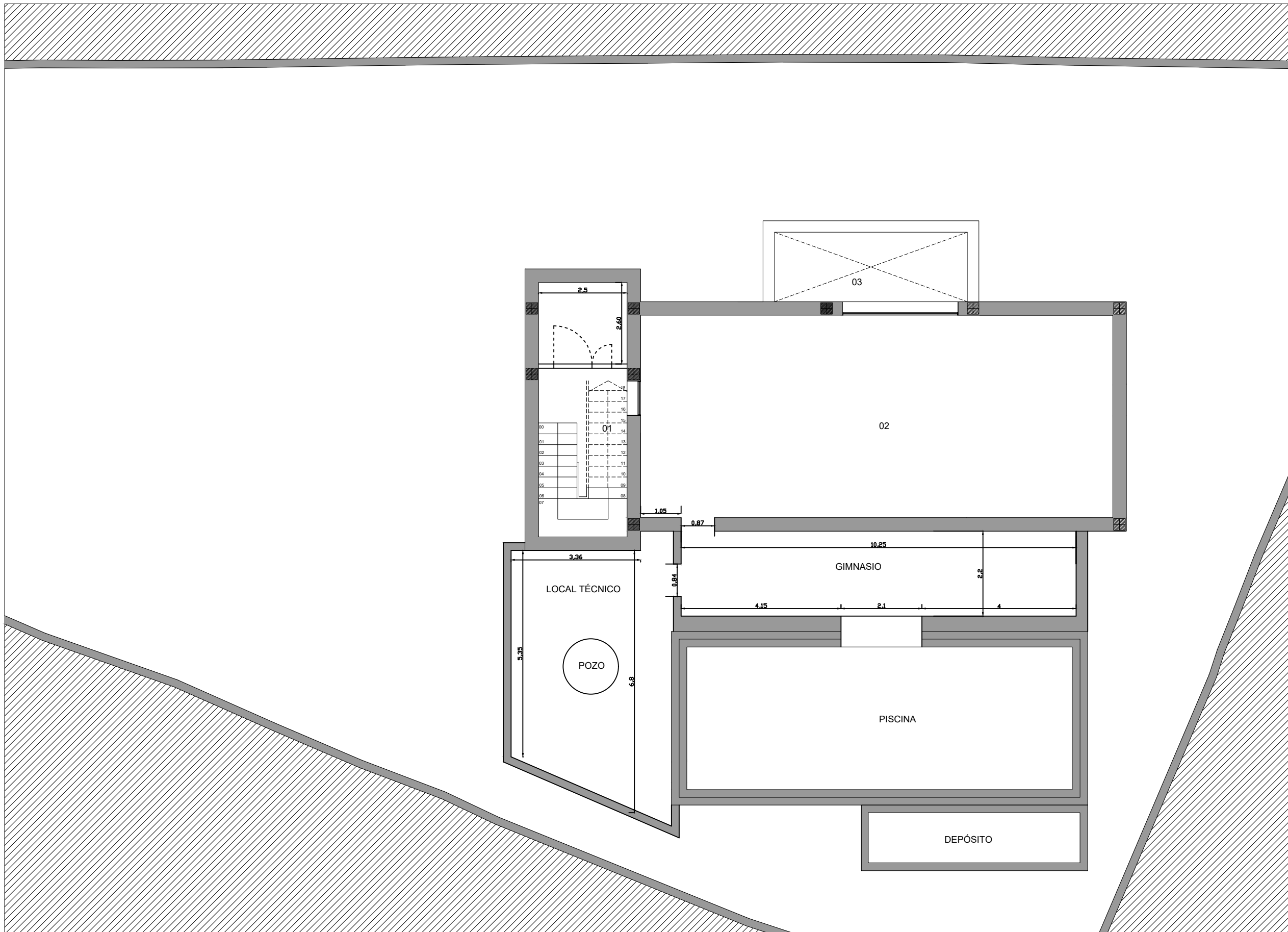
Situación: Calle Mar Norte 44, TEULADA (ALICANTE)

PLANO:
PLANTA PRIMERA - DISTRIBUCIÓN

JuanBernardo
BERTOMEU
 ARQUITECTOS

Fecha: Septiembre de 2022
 Escala: 1/100 en A3

Plano: **09**



Tipo de proyecto:
 PROYECTO BÁSICO Y DE EJECUCIÓN DE VIVIENDA UNIFAMILIAR AISLADA Y PISCINA

Cliente: JORGE CANET S.L. Arquitectos:
 BERTOMEU MORAGUES, JUAN BERNARDO nº col. 14.228

Situación: Calle Mar Norte 44, TEULADA (ALICANTE)

PLANO:
 PLANTA SÓTANO - DISTRIBUCIÓN

Fecha: Septiembre de 2022
 Escala: 1/100 en A3